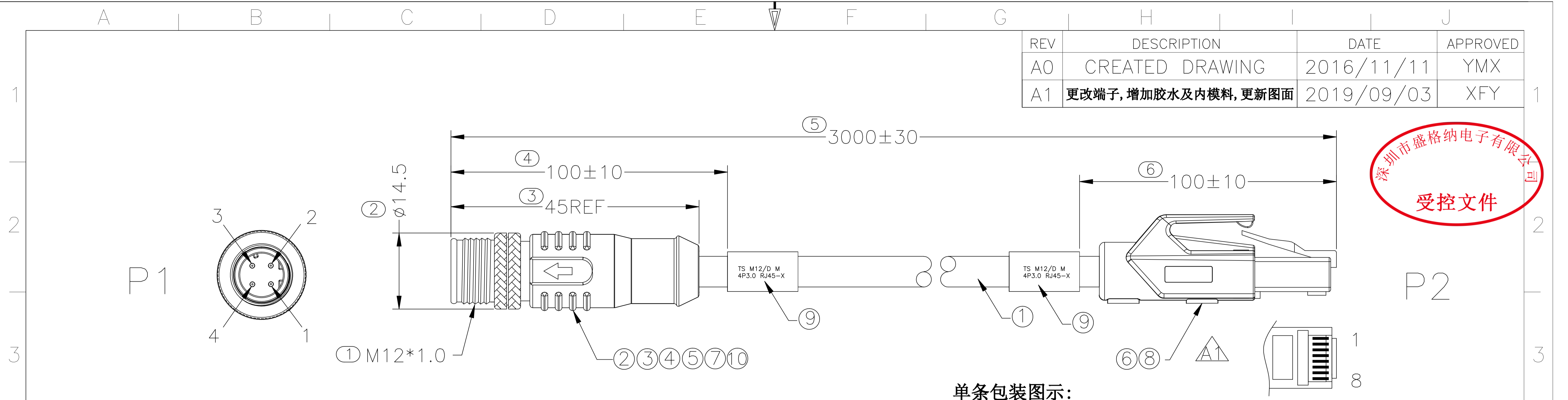
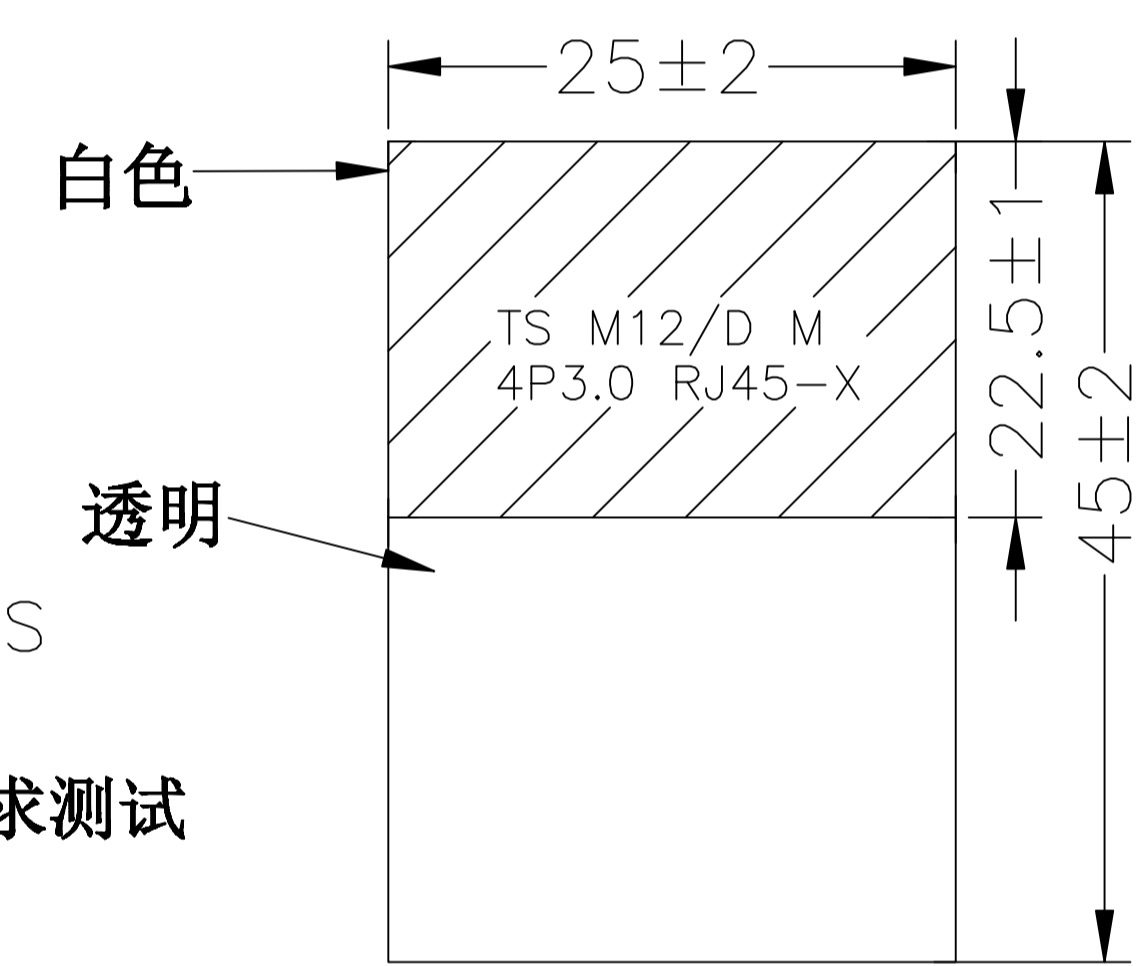


REV	DESCRIPTION	DATE	APPROVED
A0	CREATED DRAWING	2016/11/11	YMX
A1	更改端子, 增加胶水及内模料, 更新图面	2019/09/03	XFY



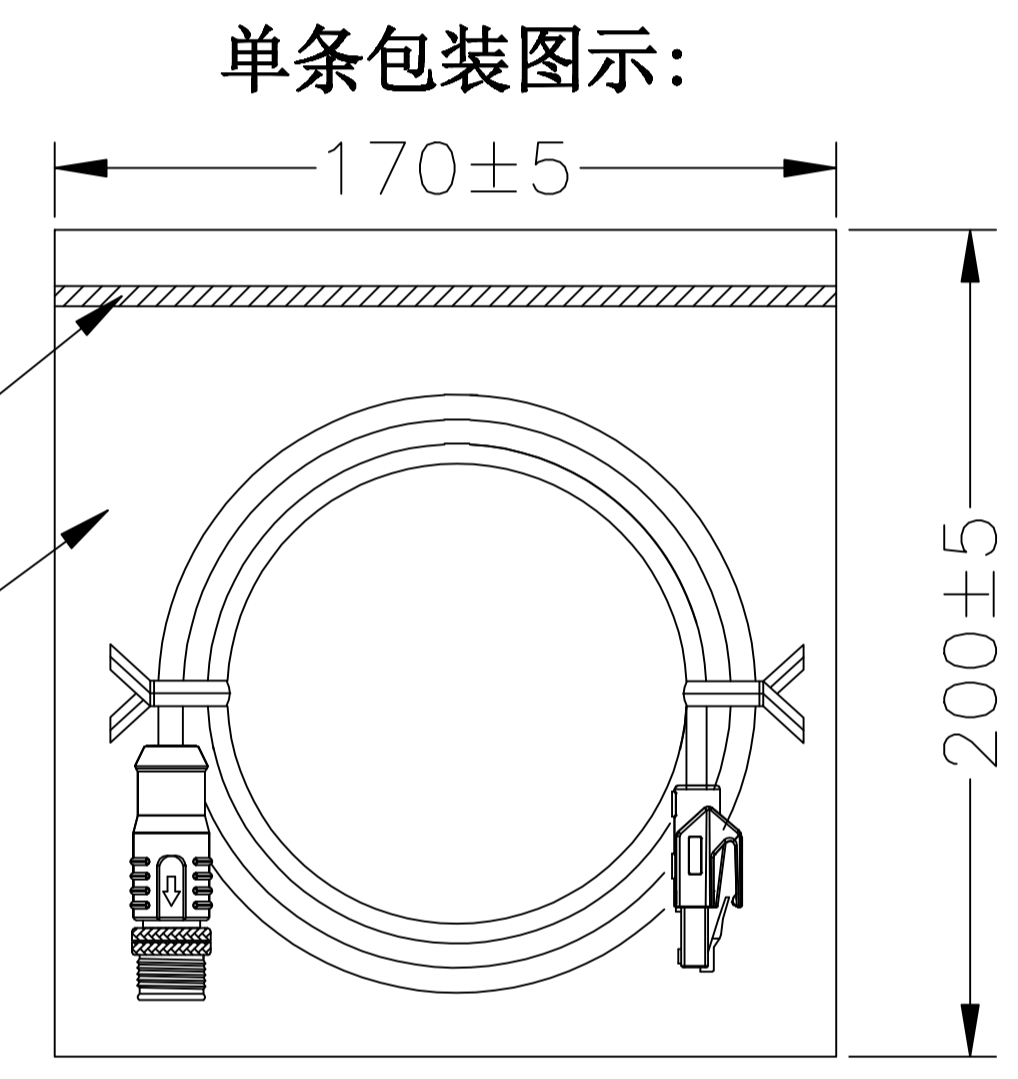
说明:

- 测试条件
 导通阻抗: 5Ω MAX
 绝缘阻抗: 10MΩ MIN
 电压: DC 300V/0.1S
- 所有材料都符合RoHS标准。
- 100%开/短路测试或客户特殊要求测试
- 模具编号: SGW01050



标签A规格描述:

- 材料: 丽龙.
- 白底黑字.
- 文本高度最大3mm, 字体为"Arial"



注: 包装图尺寸仅供参考, 包装时请根据实际情况选择合适尺寸

接线表

P1	对绞	颜色	P2
1		橙/白	1
3		橙色	2
2		蓝/白	3
4		蓝色	6
外壳		屏蔽	外壳

ITEM	PART NO.	SPECIFICATION	Q'TY	UNIT
⑩	GL00011	防水 780 AB胶水	2	g
⑨	LB00007	丽龙标签 L*W=25*45mm 一半白色一半透明不印字	2	PCS
⑧	WK00290	欧式RJ45黑色外壳(不打标)	1	PCS
⑦	PL00004	黑色TPU 105°	6	g
⑥	CN00217	水晶头8P8C 带铁壳, 装配式卡点	1	PCS
⑤	TK00001	M12 D TYPE 铆铜镀镍线端公头铜壳 $\phi 8.35 * \phi 7.3 * 16.5\text{mm}$	1	PCS
④	WK00012	M12 D TYPE 黄铜镀镍线端公头外壳 $\phi 14.5 * \phi 9.2 * 12.3\text{mm}$	1	PCS
③	TE00380	M12 M D TYPE 公端子镀金1u" 线端 $\phi 1.0 L=17.5\text{mm}$	4	PCS
②	CN00074	M12 D TYPE 黑色尼龙 公胶芯 针孔 4*1.55mm	1	PCS
①	CA00256	CAT5E SFTP 26AWG*2P墨绿色PU(无卤)OD=6.5mm L=2990mm	1	PCS

SIGNAL®
Shen Zhen Signal Electronics co.,Ltd

DRAWN BY: _____ DATE: _____
 CHECKED BY: _____ DATE: _____
 APPROVED BY: _____ DATE: _____

THE INFORMATION CONTAINED IN THIS DRAWING IS THE SOLE PROPERTY OF SIGNAL COMPANY. ANY REPRODUCTION IN PART OR WHOLE WITHOUT THE WRITTEN PERMISSION OF SIGNAL COMPANY IS PROHIBITED.

TITLE M12 D 4P/M TO RJ45/M CABLE		REV.
SGN NO	120404-57-067	A1
DWG NO	SGN01014-312	
CUSTOMER TS M12/D M 4P3.0 RJ45-X		
TOLERANCES ARE:		THIRD ANGLE PROJECTION
DECIMALES	ANGLES	SIZE: A4 UNITS: mm
.x ±0.5	x° ±2.0°	SCALE: 1:1 SHEET: 1 OF 1
.xx ±0.20	.x' ±1.0°	